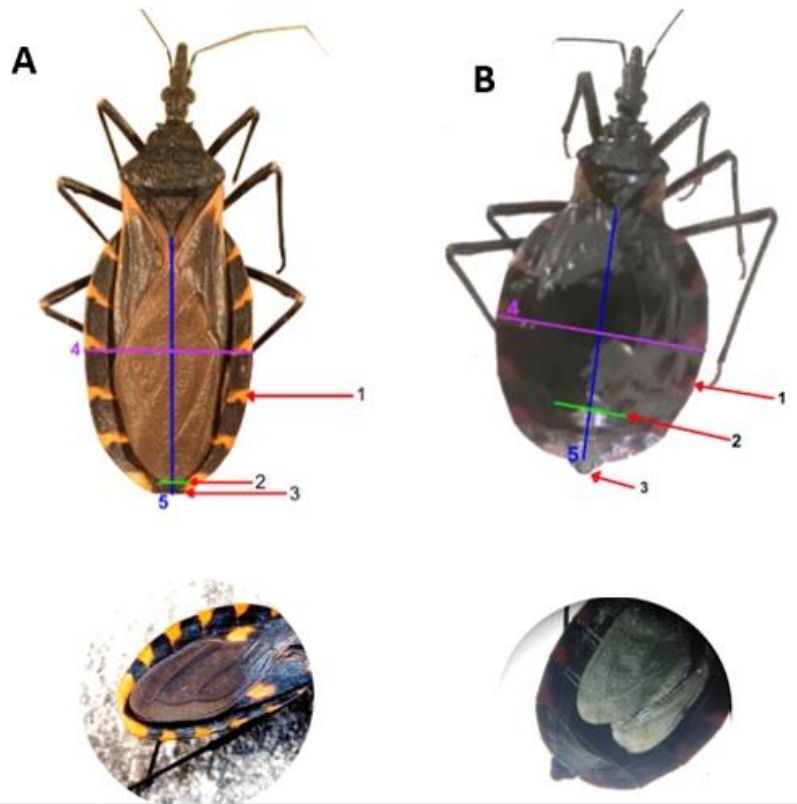
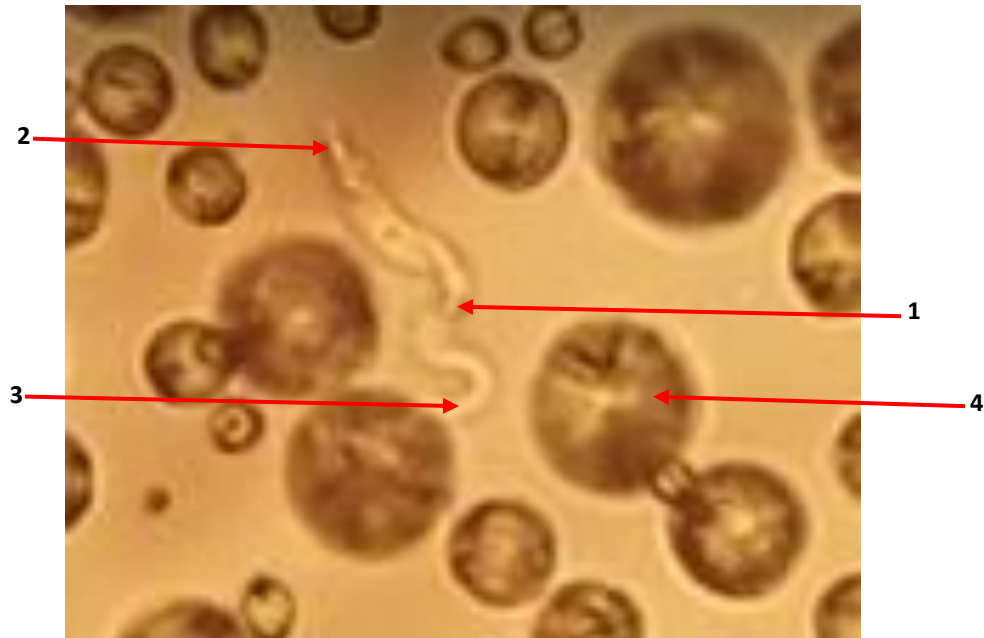


Supplementary figures



Supplementary figure 1. morphological characteristics of *T. longipennis* (A) y *T. phyllosoma* (B). according to Lent & Wygodzinsky, 1979 the main differences between *T. longipennis* (A) and *T. phyllosoma* (B), are: 1*) in (A) connexivum color are in yellow-orange range, in other hand in (B) connexivum color are in red-orange range, 2*) (A) has elongated hemelytron, meanwhile (B) has short hemelytron, almost reaching the sixth connexivum, 3*) in (A) Anal basin not protruding from the abdomen, contradictory to (A) in (B) anal basin protruding from the abdomen. 4*,5*) in (A) abdomen cavity has an oval shape, more length than wide, divergent to (A) in (B) abdomen cavity has a circular shape.

*numbers indicate the lines and arrows using in the figure indicate the zones of differentiation in *T. longipennis* (A) y *T. phyllosoma* (B) morphology.



Supplementary Figure 2. *T. cruzi* parasite in the epomastigote development stage. *T. cruzi*, isolated from *T. longipennis* feces, arrows indicate (1) nucleus and (2) kinetoplast and (3) flagellum sections. Additionally, figure indicate a (4) lysed erythrocyte of *T. longipennis* digestion process.